

50 Schweizer Volkslieder 2

für Gitarre [od. für Gesang und Gitarre]

1 []: Mer sönd halt Appezeller



«Mer sönd halt Appezeller» (7 Strophen)

KONKORDANZEN

2 []: Mir Senne hei's lustig



«Mir Senne hei's lustig» (6 Strophen)

KONKORDANZEN

3 []: Jetz wemmer e bitzeli loschtig see



[1. Strophe nach Merz, Johann]: «Jetz wemmer e bitzeli loschtig see ond nomme lenger huuse» (13 Strophen)

KONKORDANZEN

4 **[]: Der Mäie chunt zum grüne Wald y**

Musical notation for the piece 'Der Mäie chunt zum grüne Wald y'. It is written on a single staff in treble clef with a key signature of one sharp (F#) and a 6/8 time signature. The melody consists of eighth and sixteenth notes. Dynamics are indicated as *f* (forte) at the beginning and end, and *mp* (mezzo-piano) in the middle section.

«Der Mäie chunt zum grüne Wald y» (10 Strophen)

KONKORDANZEN

5 **[]: Griess Gott, Bääseli, kumm sitz zue**

Musical notation for the piece 'Griess Gott, Bääseli, kumm sitz zue'. It is written on a single staff in treble clef with a key signature of one sharp (F#) and a common time signature (C). The melody consists of quarter and eighth notes.

«Griess Gott, Bääseli, kumm sitz zue» (6 Strophen)

KONKORDANZEN

6 **[]: Chumm mir wie ga Chrieseli gwinne**

Musical notation for the piece 'Chumm mir wie ga Chrieseli gwinne'. It is written on a single staff in treble clef with a key signature of two sharps (F# and C#) and a 3/8 time signature. The melody consists of quarter and eighth notes.

«Chumm mir wie ga Chrieseli gwinne» (3 Strophen)

KONKORDANZEN

7 **[]: Anne Bääbeli, lupf din Fuess**

☒ «Anne Bäabeli, lupf din Fuess» (3 Strophen)

KONKORDANZEN

8 **[]: Ihr klare Seraphim**

☒ «Ihr klare Seraphim» (4 Strophen)

KONKORDANZEN

9 **Kundert, D.: D Flöckli tanzed, juperlihee!**

☒ «D Flöckli tanzed, juperlihee!» (3 Strophen)

♪ gleiche Melodie & gleicher Text

R. Fink 1982: Sunnechringeli – Liedli zum Singe und Spile (3)

H. Willisegger 1975: Guete Tag (31)

10 **[]: Go baade**



☒ «Go baade, go baade» (3 Strophen)

11 []: Mueter, lueg do



☒ «Mueter, lueg do» (11 Strophen)

KONKORDANZEN

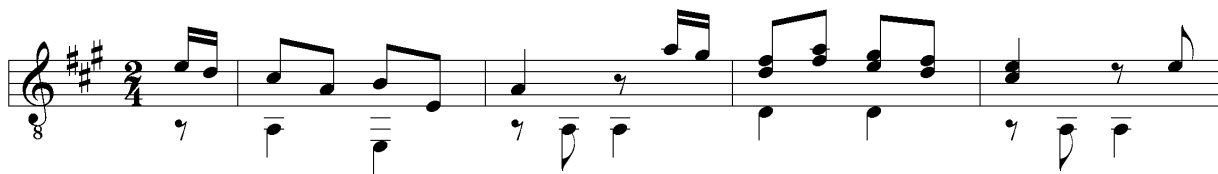
12 []: Wänn äine e paar jung Tuube wott haa



☒ «Wänn äine e paar jung Tuube wott haa» (3 Strophen)

KONKORDANZEN

13 Roelli, Hans [Moritz]: Wieder ist nach dunkler Nacht



☒ [Roelli, Hans Moritz]: «Wieder ist nach dunkler Nacht» (3 Strophen)

KONKORDANZEN

14 []: Dur's Oberland uf

Musical notation for 'Dur's Oberland uf' in G major, 3/4 time. The melody is written on a treble clef staff with a key signature of one sharp (F#) and a 3/4 time signature. The bass line consists of dotted half notes. The piece begins with a repeat sign and ends with a double bar line.

«Dur's Oberland uf» (ohne weitere Strophen)

KONKORDANZEN

15 []: Äi du verflixtes Möleleleli

Musical notation for 'Äi du verflixtes Möleleleli' in G major, 2/4 time. The melody is written on a treble clef staff with a key signature of one sharp (F#) and a 2/4 time signature. The bass line consists of quarter notes. The piece begins with a repeat sign and ends with a double bar line.

«Äi du verflixtes Möleleleli» (4 Strophen)

KONKORDANZEN

16 []: Wönde nüd aa

Musical notation for 'Wönde nüd aa' in G major, common time. The melody is written on a treble clef staff with a key signature of one sharp (F#) and a common time signature. The bass line consists of quarter notes. The piece begins with a repeat sign and ends with a double bar line.

«Wönde nüd aa» (5 Strophen)

KONKORDANZEN

17 []: Niene geit's so schön und lustig



☒ [Wiedmer, Christian]: «Niene geit's so schön und lustig» (6 Strophen)

☼ Siehe Bemerkung bei Giuliani, Mauro: *Giulianate contenenti varie idee sentimentali* Op. 148.

KONKORDANZEN

- V Hochdorf: Maly, [1973]
- BIBL Turbenthal: Privatsammlung Christoph Jäggin
- K siehe Band 1